

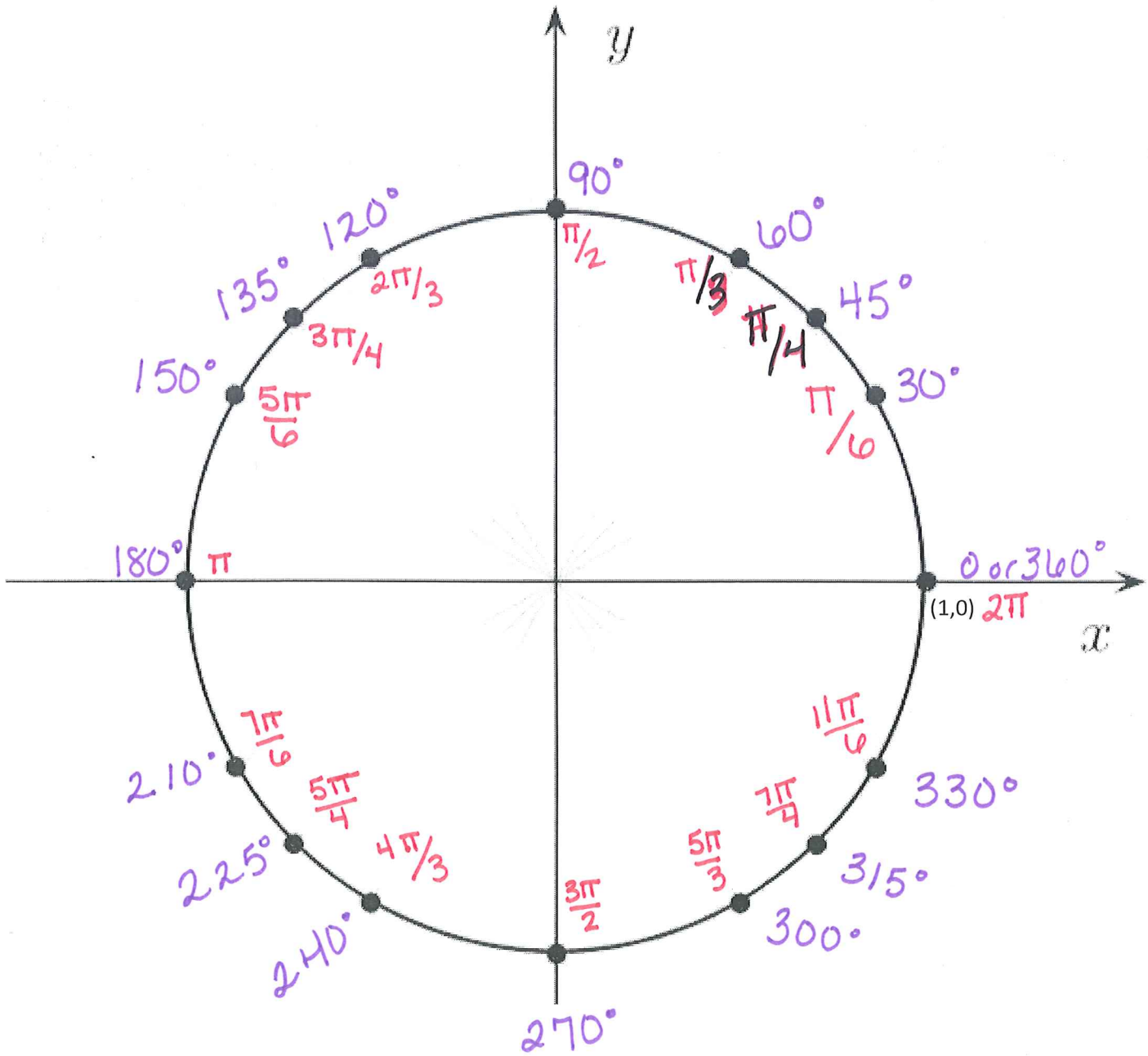
Name: Key Date: _____

Alg 2 Supp 13-2/13-3 Angles, Reference Angles & Radians Hwk:

1. On the circle below, draw and label all of the following degrees:

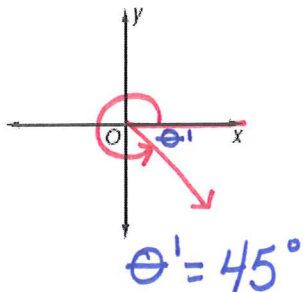
0, 30, 45, 60, 90, 120, 135, 150, 180, 210, 225, 240, 270, 300, 315, 330, and 360.

Then find and label all radians of each degree.

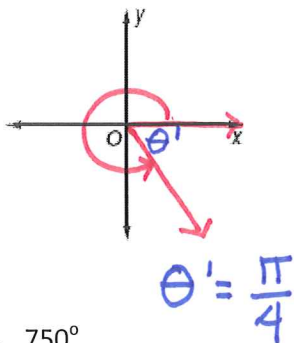


2. Without looking on the front, sketch each angle and find its reference angle.

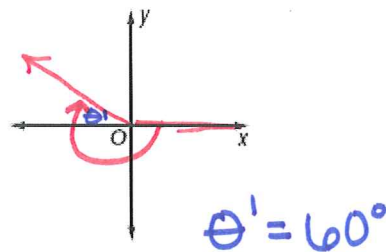
a). 315°



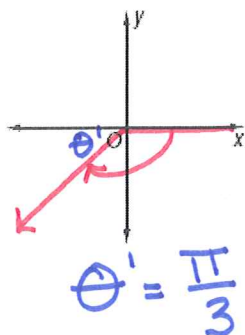
b). $\frac{7\pi}{4}$



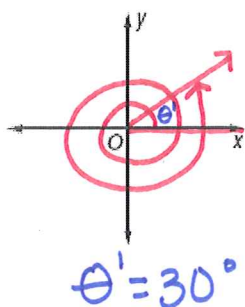
c). -240°



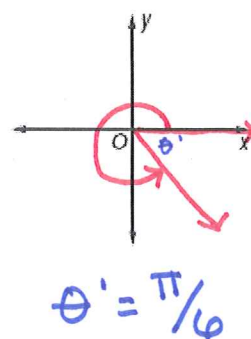
d). $-\frac{2\pi}{3}$



e). 750°



f). $\frac{5\pi}{6}$



Find one angle with positive measure and one angle with negative measure coterminal with each angle.

19. 45° $405^\circ, -315^\circ$

20. 60° $420^\circ, -300^\circ$

21. 370° $10^\circ, -350^\circ$

22. -90° $270^\circ, -450^\circ$

23. $\frac{2\pi}{3}$ $\frac{8\pi}{3}, -\frac{4\pi}{3}$

24. $\frac{5\pi}{2}$ $\frac{\pi}{2}, -\frac{3\pi}{2}$

25. $\frac{\pi}{6}$ $\frac{13\pi}{6}, -\frac{11\pi}{6}$

26. $-\frac{3\pi}{4}$ $\frac{5\pi}{4}, -\frac{11\pi}{4}$