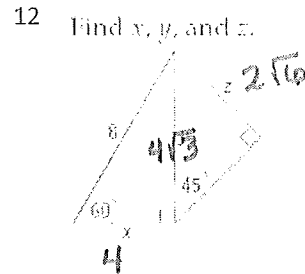
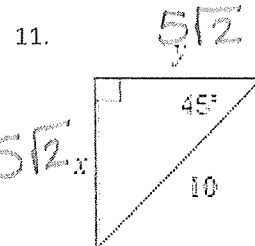
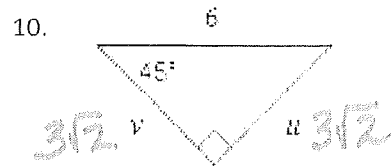
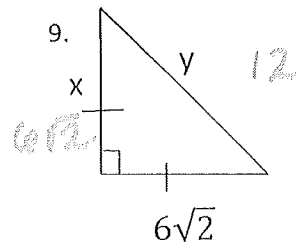
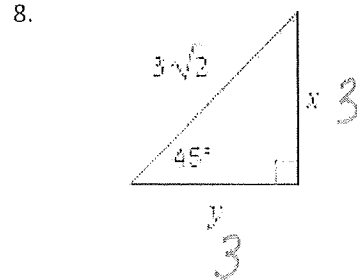
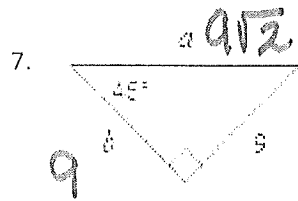
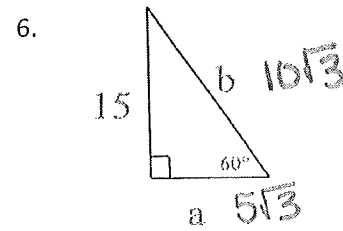
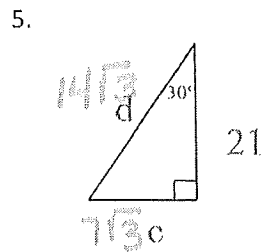
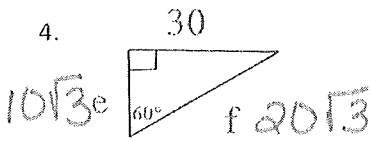
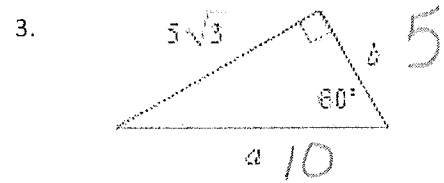
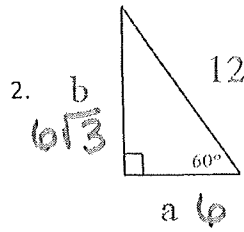
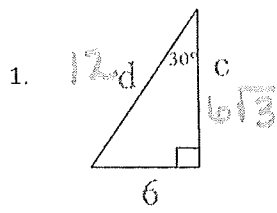
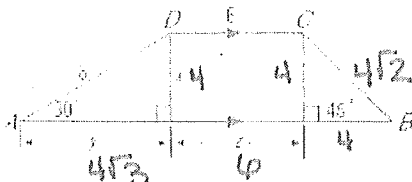


Key

Geometry
8.3 Practice Examples
Special Right Triangles



13. Find x , y , z , and the perimeter of trapezoid $ABCD$.



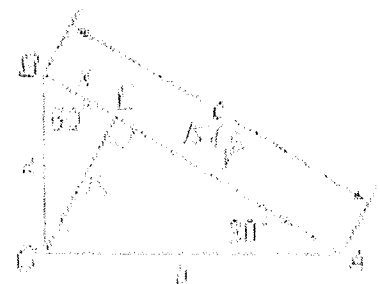
$$6 + 8 + 4\sqrt{3} + 6 + 4 + 4\sqrt{2}$$

$$24 + 4\sqrt{3} + 4\sqrt{2}$$

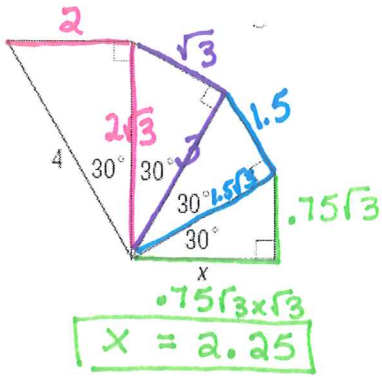
14. Use triangle ABC . Find all missing variables. **ON TEST!**

- | | |
|--------------------|---------------------|
| a. $a = 6\sqrt{3}$ | b. $y = 15\sqrt{3}$ |
| $b = 18$ | $a = 10\sqrt{3}$ |
| $c = 12\sqrt{3}$ | $b = 30$ |
| $x = 3\sqrt{3}$ | $x = 2\sqrt{3}$ |
| | $c = 20\sqrt{3}$ |

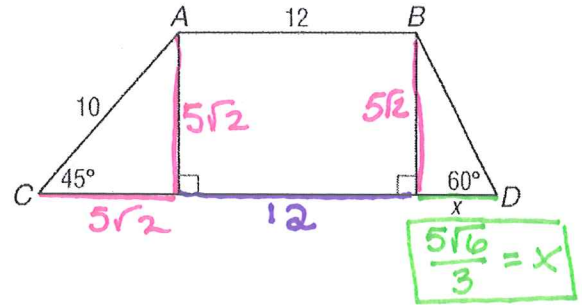
- | |
|------------------|
| c. $b = 18$ |
| $a = 6\sqrt{3}$ |
| $c = 12\sqrt{3}$ |
| $x = 3\sqrt{3}$ |
| $y = 9\sqrt{3}$ |



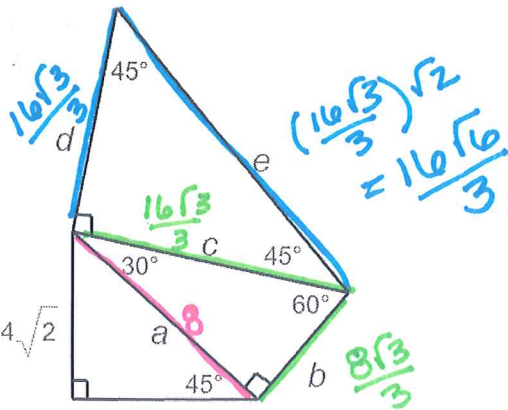
15.



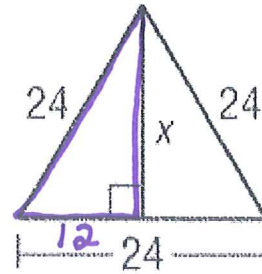
16.



17.



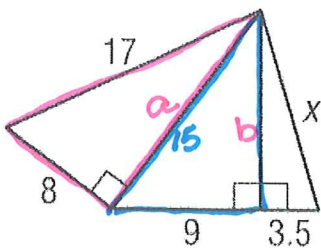
18.



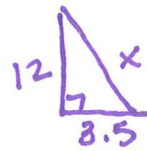
could do pyth. thm
 or 30-60-90 b/c
 12 is 1/2 of 24

$x = 12\sqrt{3}$

19.



Do pyth. thm 3
 times :



$12^2 + 3.5^2 = x^2$

$x = 12.5$
 can't simplify
 Radical b/c
 already a
 decimal.

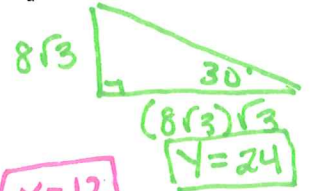
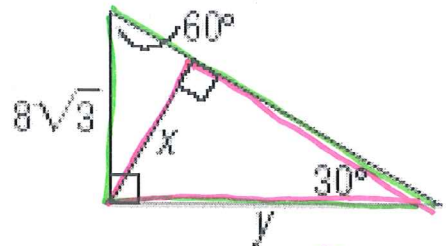
$8^2 + a^2 = 17^2$

$a = 15$

$9^2 + b^2 = 15^2$

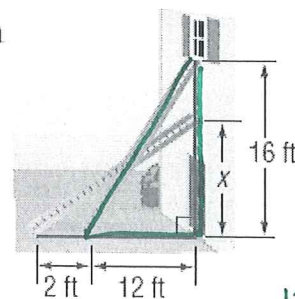
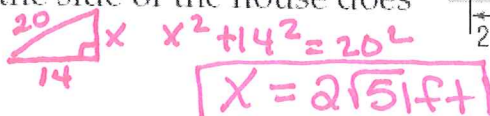
$b = 12$

20.



$x = 12$

21. **PAINTING** A painter sets a ladder up to reach the bottom of a second-story window 16 feet above the ground. The base of the ladder is 12 feet from the house. While the painter mixes the paint, a neighbor's dog bumps the ladder, which moves the base 2 feet farther away from the house. How far up the side of the house does the ladder reach?



Find ladder
 first
 $L = 20$
 $12^2 + 16^2 = L^2$
 $L = 20ft$