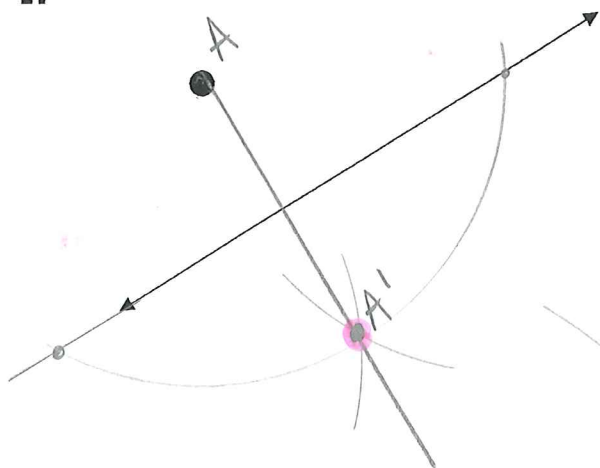


Basic Transformation Constructions Notes

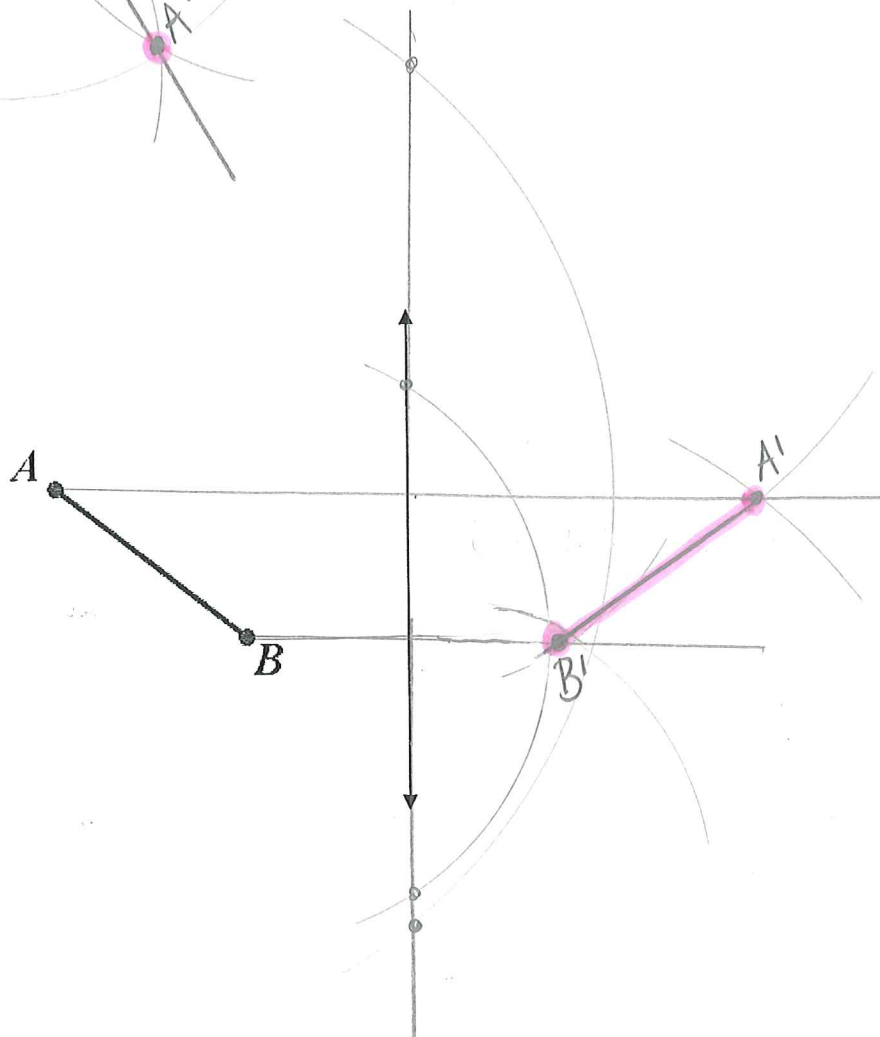
Reflect the following figures over the given lines

1.

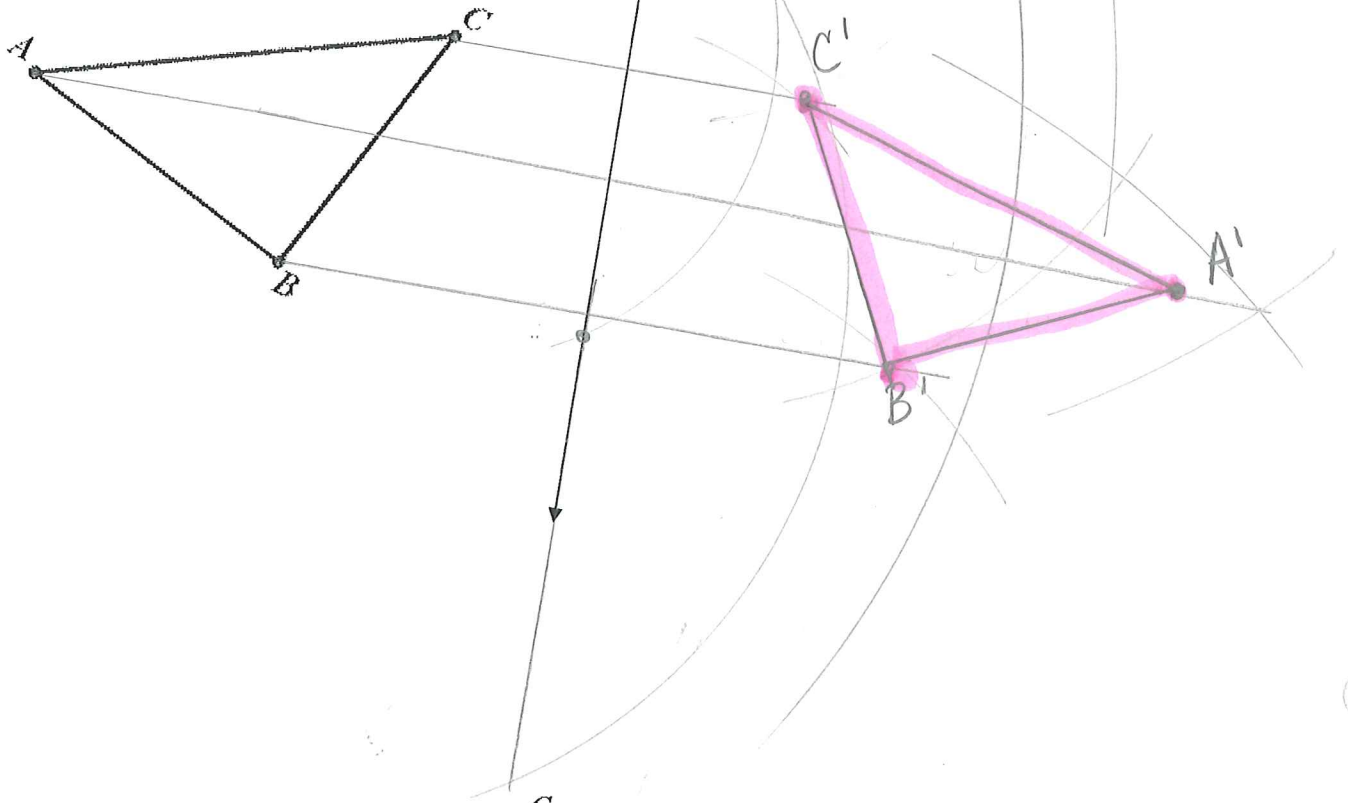


- ① perpendicular line thru point
- ② measure

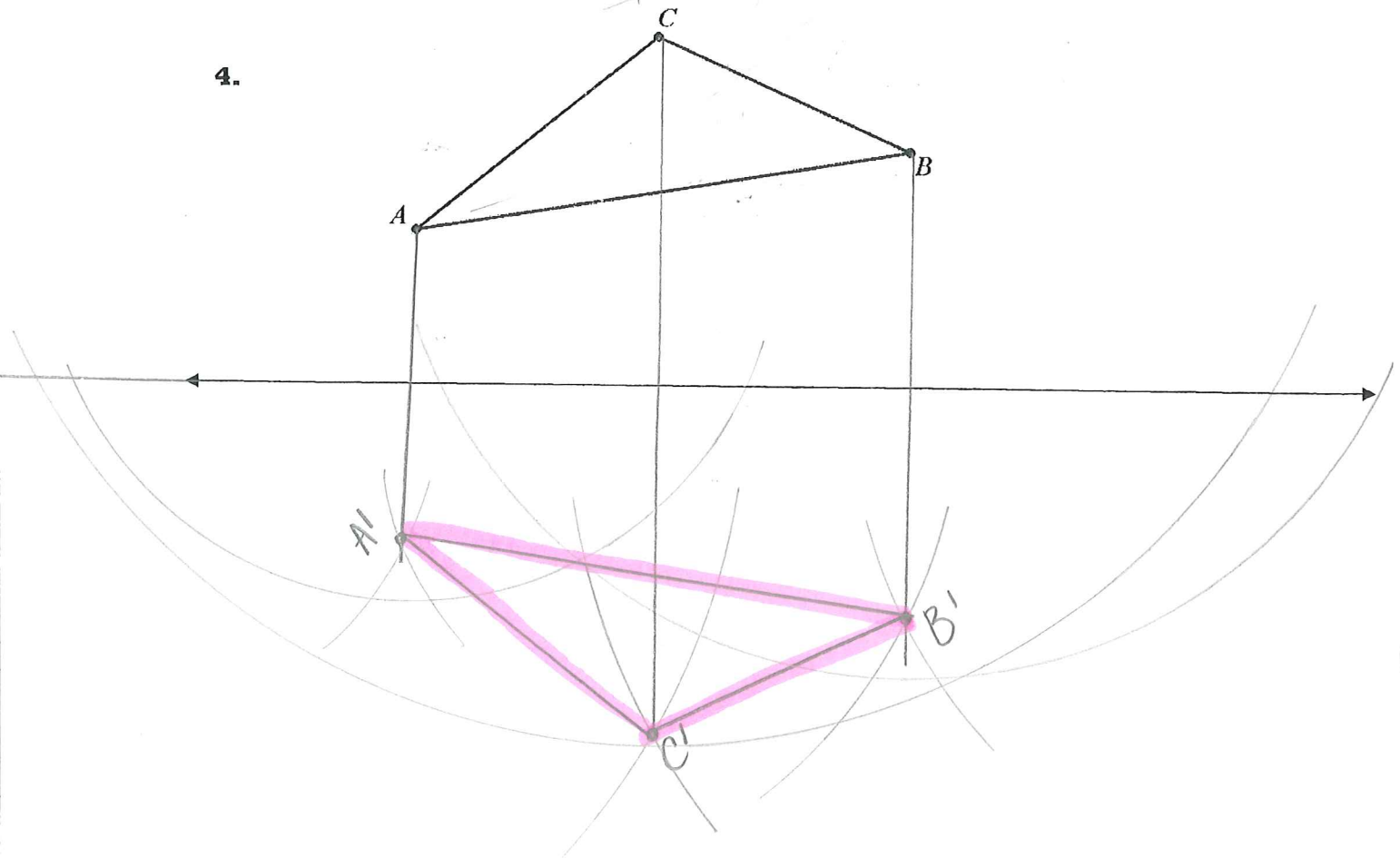
2.



3.



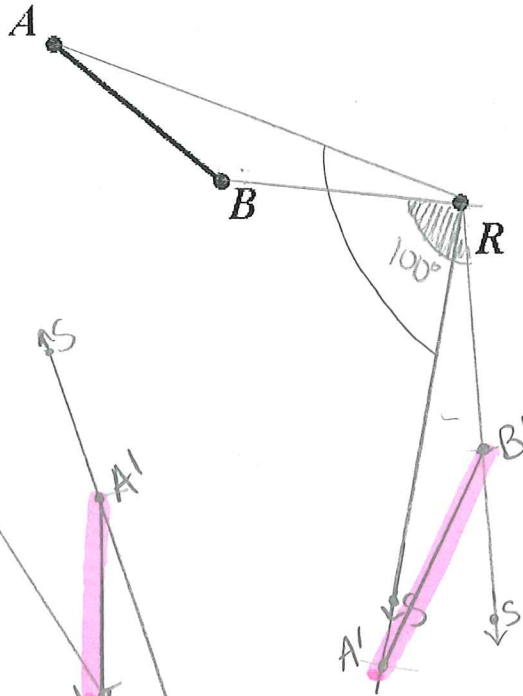
4.



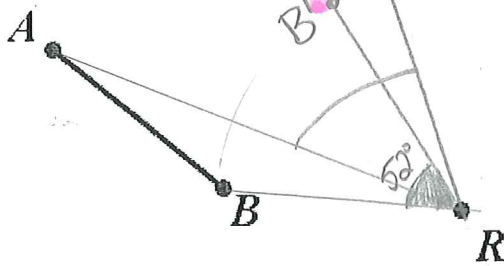
- ① draw segment from point R to point A
- ② use protractor to measure 100° \angle counterclockwise w/ RA as a side
- ③ label the other side of the \angle \overrightarrow{RS}
- ④ use compass to copy RA onto \overrightarrow{RS}
- ⑤ repeat for B

Rotate the given pre-image the desired rotation around the point of rotation R.

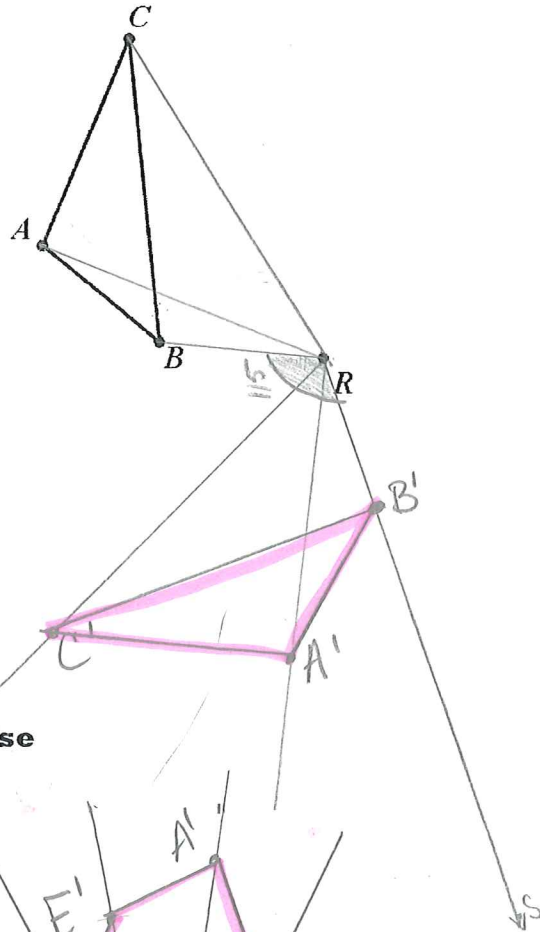
1. Rotate 100° counterclockwise



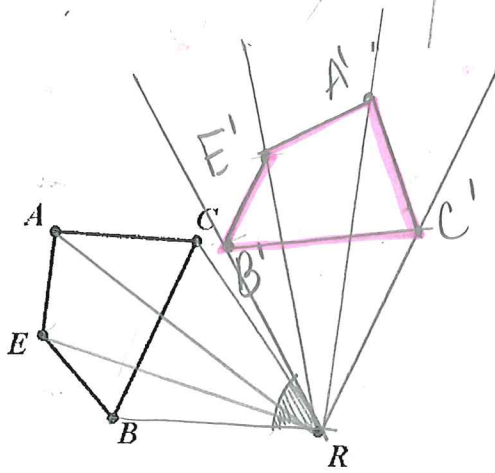
2. Rotate 52° clockwise.



3. Rotate 115° counterclockwise



4. Rotate 60° clockwise



Change
So not all
CW are protractor
facing down