

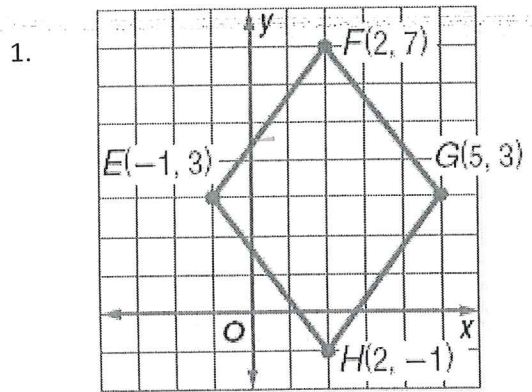
Name: Key

Area - Day 3

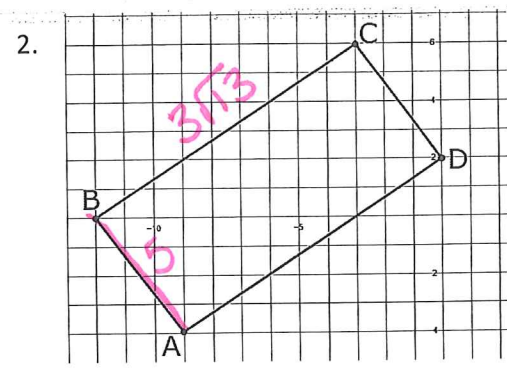
Coordinate Geometry and Composite Figures HW #1

Find the area of each composite figure. You must show all work.

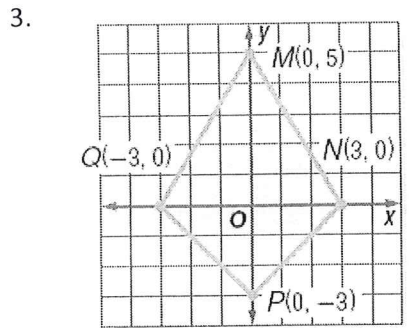
ALL Work must be shown for check in!



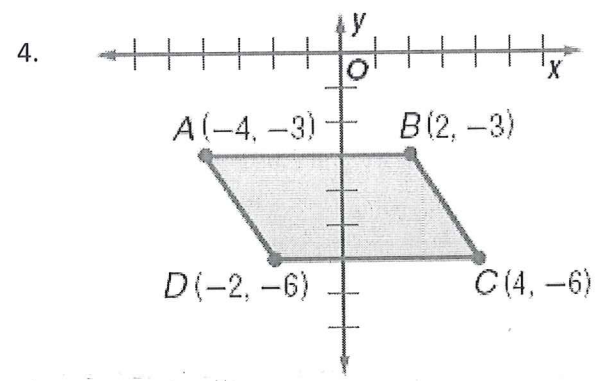
$A = 24 \text{ units}^2$



$A = 15\sqrt{3} \text{ units}^2$

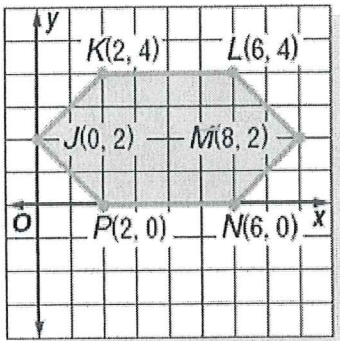


$A = 24 \text{ units}^2$



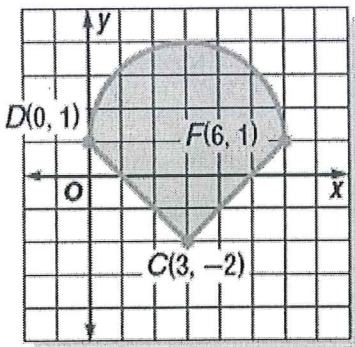
$A = 18 \text{ units}^2$

5.



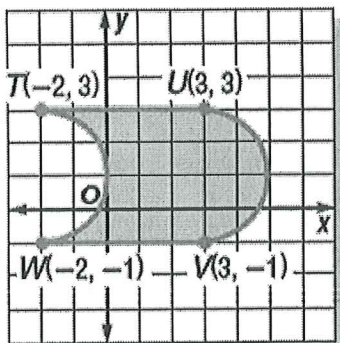
$$A = 24 \text{ units}^2$$

6.



$$A = 9 + 4.5\pi \text{ units}^2$$

7.



$$A = 20 \text{ units}^2$$