

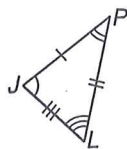
4-3 Skills Practice

Congruent Triangles

Identify the congruent triangles in each figure.

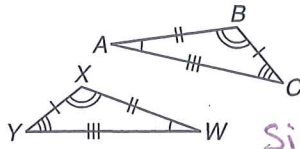
and show corr. sides & angles

1. $\triangle JPL \cong \triangle TVS$ 2.



Sides
 $JP \cong TV$
 $PL \cong VS$
 $JL \cong TS$

Angles
 $\angle J \cong \angle T$
 $\angle P \cong \angle V$
 $\angle L \cong \angle S$

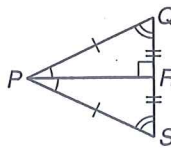


$\triangle WXY \cong \triangle ABC$

Sides
 $XY \cong BC$
 $YW \cong AC$
 $XW \cong AB$

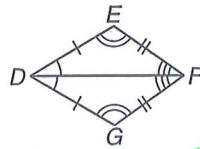
Angles
 $\angle A \cong \angle W$
 $\angle B \cong \angle X$
 $\angle C \cong \angle Y$

3. $\triangle QRP \cong \triangle SRP$ 4.



Sides
 $PQ \cong PS$
 $QR \cong SR$
 $PR \cong PR$

Angles
 $\angle Q \cong \angle S$
 $\angle QRP \cong \angle SRP$
 $\angle RPQ \cong \angle RPS$



$\triangle DEF \cong \triangle DGF$

Sides
 $DE \cong DG$
 $EF \cong GF$
 $DF \cong DF$

Angles
 $\angle E \cong \angle G$
 $\angle EDF \cong \angle GDF$
 $\angle EFD \cong \angle GFD$

Name the congruent angles and sides for each pair of congruent triangles.

5. $\triangle ABC \cong \triangle FGH$

Angles
 $\angle A \cong \angle F$
 $\angle B \cong \angle G$
 $\angle C \cong \angle H$

Sides
 $AB \cong FG$
 $BC \cong GH$
 $AC \cong FH$

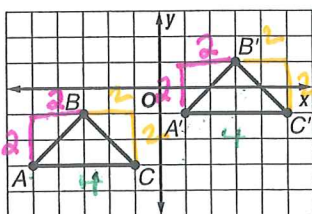
6. $\triangle PQR \cong \triangle STU$

Angles
 $\angle P \cong \angle S$
 $\angle Q \cong \angle T$
 $\angle R \cong \angle U$

Sides
 $PQ \cong ST$
 $QR \cong TU$
 $PR \cong SU$

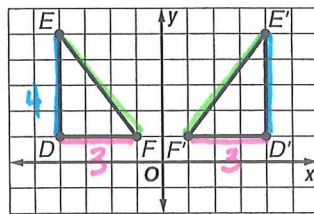
Verify that each of the following transformations preserves congruence, and name the congruence transformation.

7. $\triangle ABC \cong \triangle A'B'C'$



$AC = 4$
 $A'C' = 4$
 $AC \cong A'C'$
 $2^2 + 2^2 = BC^2$

8. $\triangle DEF \cong \triangle D'E'F'$



$DF = 3$
 $D'F' = 3$
 $DF \cong D'F'$
 $DE = 4$
 $D'E' = 4$
 $DE \cong D'E'$

Find all distances

$2^2 + 2^2 = AB^2$
 $4 + 4 = AB^2$
 $\sqrt{8} = AB$
 $AB \cong A'B'$

$2^2 + 2^2 = A'B'^2$
 $4 + 4 = A'B'^2$
 $\sqrt{8} = A'B'$
 $BC \cong B'C'$

$3^2 + 4^2 = EF^2$
 $9 + 16 = EF^2$
 $\sqrt{25} = EF$
 $5 = EF$
 $3^2 + 4^2 = E'F'^2$
 $5 = E'F'$