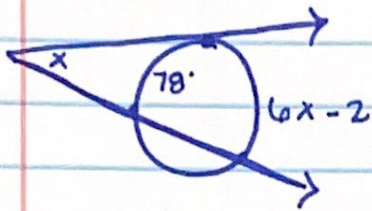


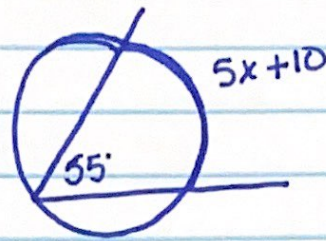
Final Exam Review

Day 2

1.) Find x .



2.) Find x



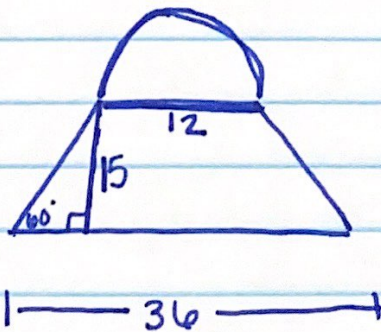
3.) list 4 angles coterminal to 735° .

4.) Given $(2\sqrt{3}, -2)$ on the terminal side of θ , find all 6 trig ratios.

5.) Given $\sin = -\frac{1}{2}$ in Q_{III}
find the other 5 trig values.

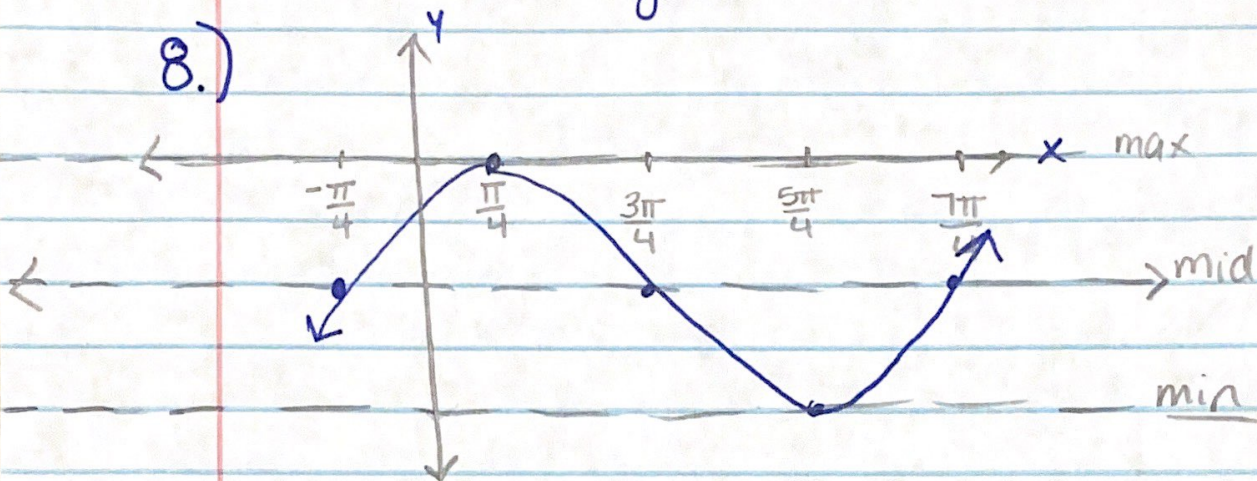
6.) Find the area of a
regular pentagon with
side length 21m. Round
to the nearest 3 decimals.

7.) Find the area:

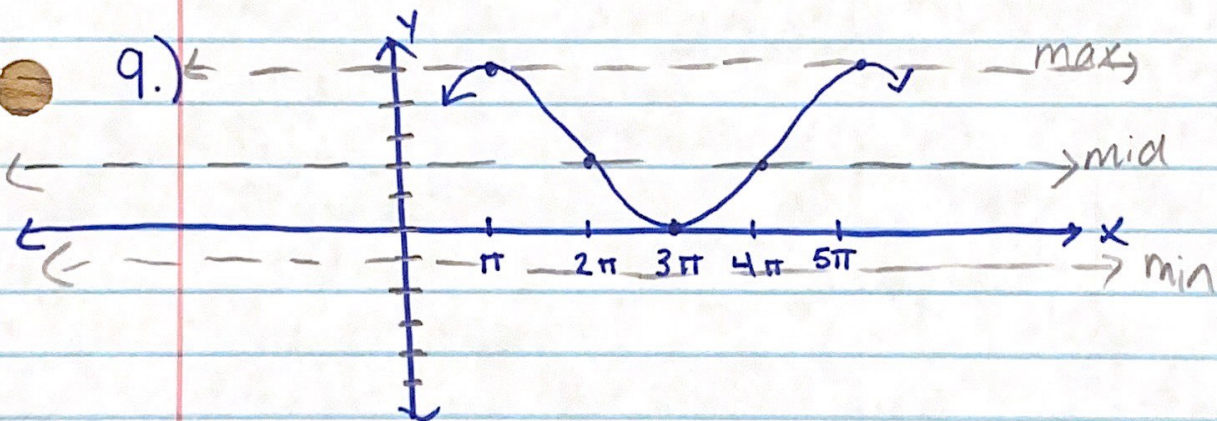


Write the equation of the following functions.

8.)



9.)



10.) Graph $y = \sin(\theta + 30)$ 11.) Graph $y = \cos(\theta - \frac{\pi}{4})$