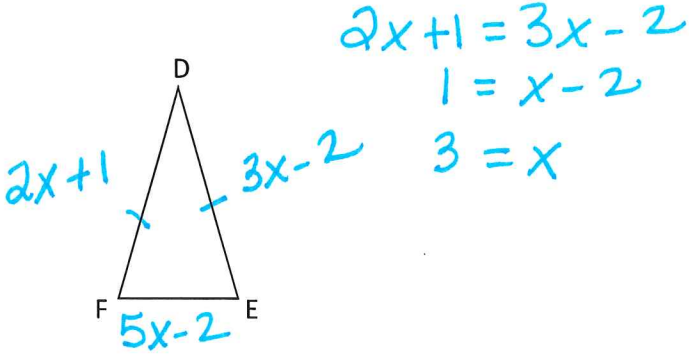


Names: \_\_\_\_\_

Key

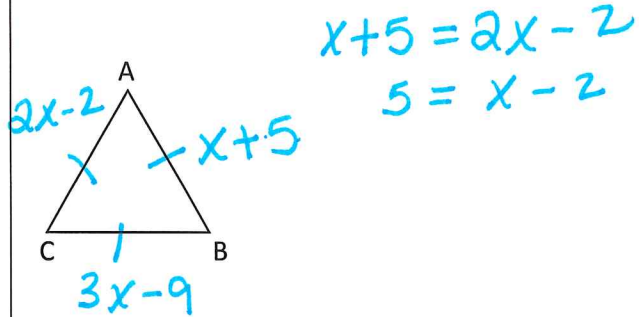
### Rally Coach Review from 4.1

- 1.)  $\triangle DEF$  is isosceles,  $\angle D$  is the vertex angle (meaning it is between the two congruent segments)  $DE = 3x - 2$ ,  $DF = 2x + 1$ , and  $EF = 5x - 2$ . Find  $x$  and the measure of each side of the triangle.



$x = \underline{3}$   $DE = \underline{7}$   $DF = \underline{7}$   $EF = \underline{13}$

- 2.)  $\triangle ABC$  is equilateral with  $AB = x + 5$ ,  $BC = 3x - 9$ , and  $CA = 2x - 2$ . Find  $x$  and the measure of each side of the triangle.

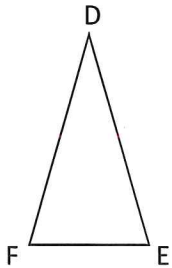


$x = \underline{7}$   $AB = \underline{12}$   $BC = \underline{12}$   $CA = \underline{12}$

Names: \_\_\_\_\_

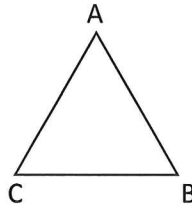
### Rally Coach Review from 4.1

- 1.)  $\triangle DEF$  is isosceles,  $\angle D$  is the vertex angle (meaning it is between the two congruent segments)  $DE = 3x - 2$ ,  $DF = 2x + 1$ , and  $EF = 5x - 2$ . Find  $x$  and the measure of each side of the triangle.



$x = \underline{\quad}$   $DE = \underline{\quad}$   $DF = \underline{\quad}$   $EF = \underline{\quad}$

- 2.)  $\triangle ABC$  is equilateral with  $AB = x + 5$ ,  $BC = 3x - 9$ , and  $CA = 2x - 2$ . Find  $x$  and the measure of each side of the triangle.



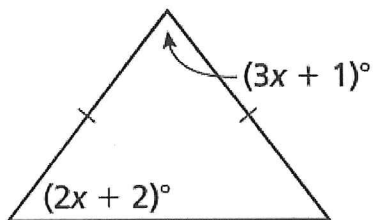
$x = \underline{\quad}$   $AB = \underline{\quad}$   $BC = \underline{\quad}$   $CA = \underline{\quad}$

Names: \_\_\_\_\_

*Key*

### Rally Coach Review from 4.6

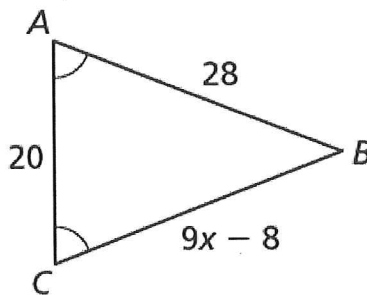
1.) Solve for x.



$$\begin{aligned} 2x + 2 + 2x + 2 + 3x + 1 &= 180 \\ 7x + 5 &= 180 \\ 7x &= 175 \end{aligned}$$

x = 25

2.) Solve for x.



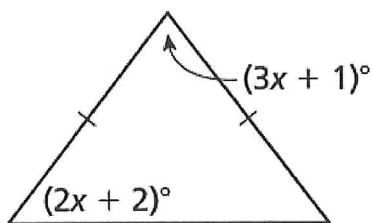
$$\begin{aligned} 9x - 8 &= 28 \\ 9x &= 36 \end{aligned}$$

x = 4

Names: \_\_\_\_\_

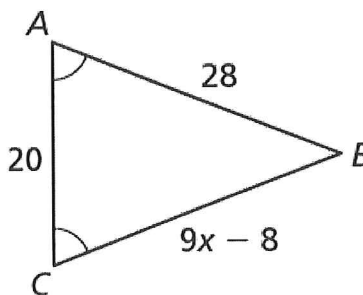
### Rally Coach Review from 4.6

1.) Solve for x.



x = \_\_\_\_\_

2.) Solve for x.

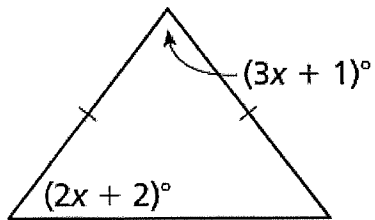


x = \_\_\_\_\_

Names: \_\_\_\_\_

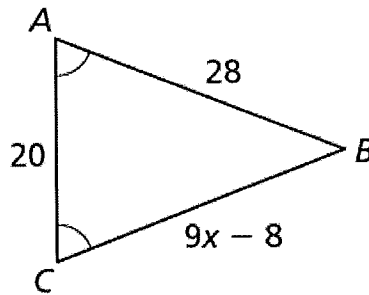
### Rally Coach Review from 4.6

1.) Solve for x.



x = \_\_\_\_\_

2.) Solve for x.

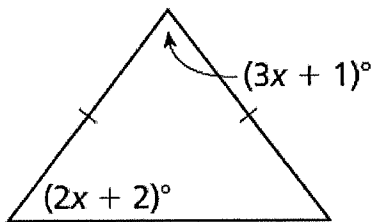


x = \_\_\_\_\_

Names: \_\_\_\_\_

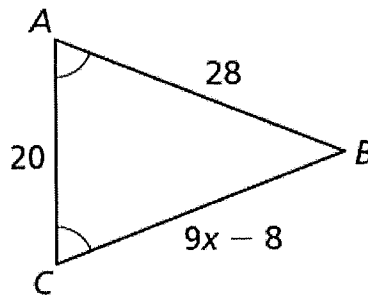
### Rally Coach Review from 4.6

1.) Solve for x.



x = \_\_\_\_\_

2.) Solve for x.

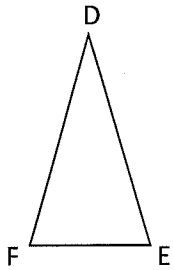


x = \_\_\_\_\_

Names: \_\_\_\_\_

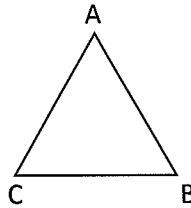
### Rally Coach Review from 4.1

- 1.)  $\triangle DEF$  is isosceles,  $\angle D$  is the vertex angle (meaning it is between the two congruent segments)  $DE = 3x - 2$ ,  $DF = 2x + 1$ , and  $EF = 5x - 2$ . Find  $x$  and the measure of each side of the triangle.



$x =$  \_\_\_\_\_  $DE =$  \_\_\_\_\_  $DF =$  \_\_\_\_\_  $EF =$  \_\_\_\_\_

- 2.)  $\triangle ABC$  is equilateral with  $AB = x + 5$ ,  $BC = 3x - 9$ , and  $CA = 2x - 2$ . Find  $x$  and the measure of each side of the triangle.

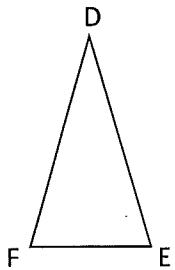


$x =$  \_\_\_\_\_  $AB =$  \_\_\_\_\_  $BC =$  \_\_\_\_\_  $CA =$  \_\_\_\_\_

Names: \_\_\_\_\_

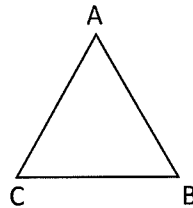
### Rally Coach Review from 4.1

- 1.)  $\triangle DEF$  is isosceles,  $\angle D$  is the vertex angle (meaning it is between the two congruent segments)  $DE = 3x - 2$ ,  $DF = 2x + 1$ , and  $EF = 5x - 2$ . Find  $x$  and the measure of each side of the triangle.



$x =$  \_\_\_\_\_  $DE =$  \_\_\_\_\_  $DF =$  \_\_\_\_\_  $EF =$  \_\_\_\_\_

- 2.)  $\triangle ABC$  is equilateral with  $AB = x + 5$ ,  $BC = 3x - 9$ , and  $CA = 2x - 2$ . Find  $x$  and the measure of each side of the triangle.



$x =$  \_\_\_\_\_  $AB =$  \_\_\_\_\_  $BC =$  \_\_\_\_\_  $CA =$  \_\_\_\_\_