

Name: _____

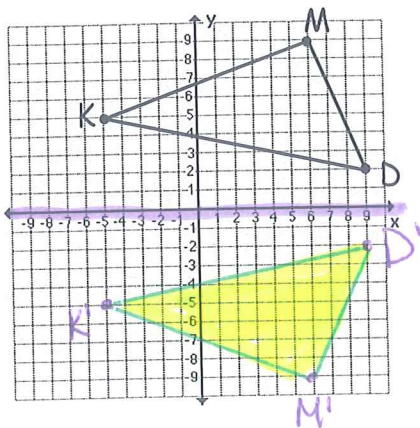
Key

Hour: _____

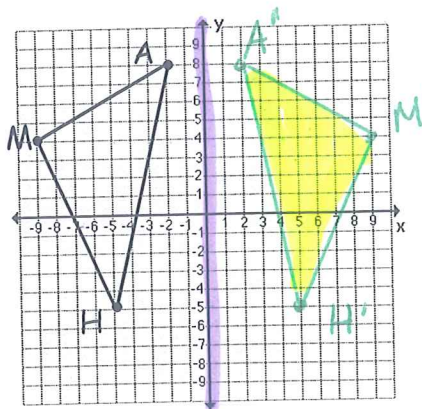
Reflections Homework

1. Reflect the figures below across the indicated line of reflection.

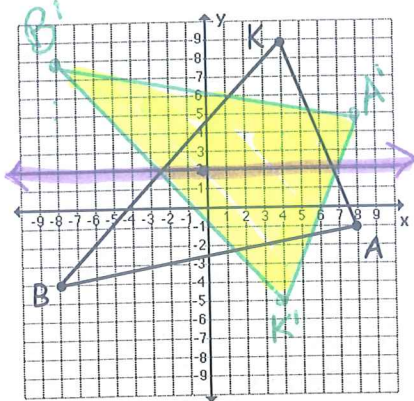
a. $y = 0$



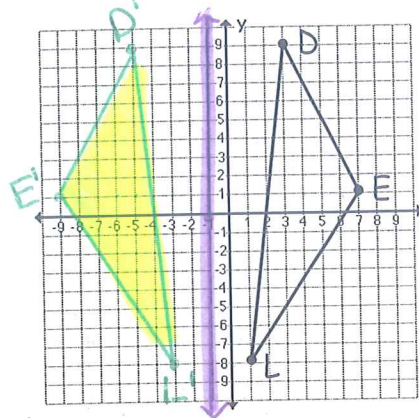
b. $x = 0$



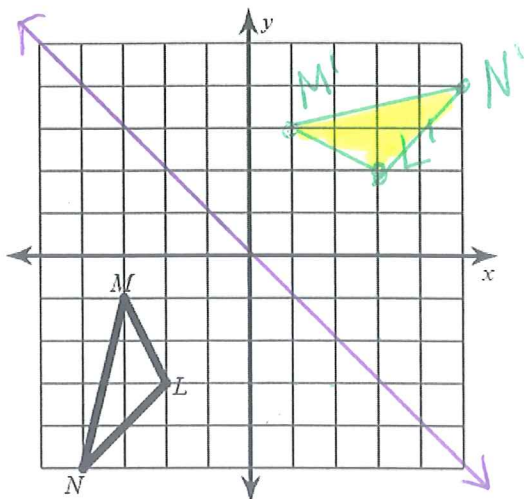
c. $y = 2$



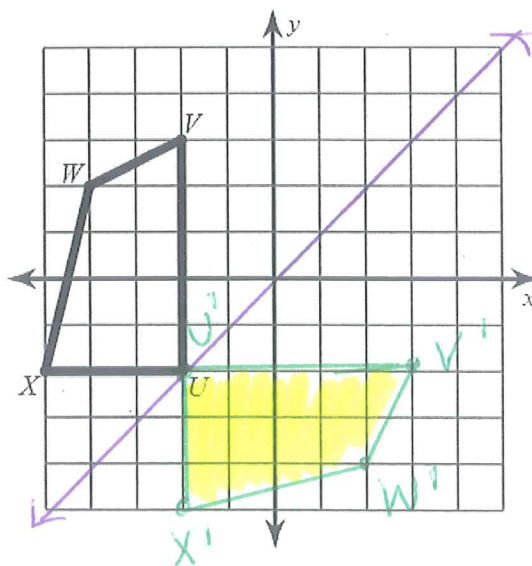
d. $x = -1$



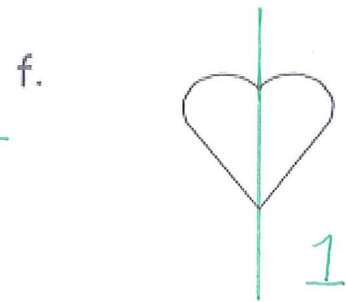
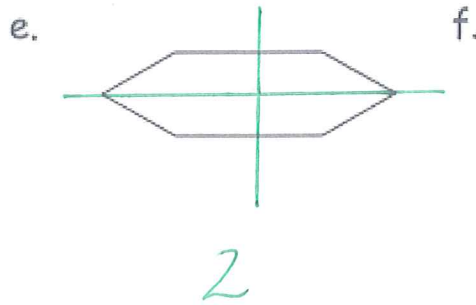
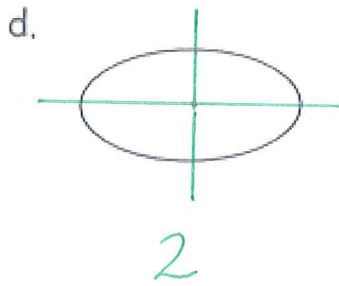
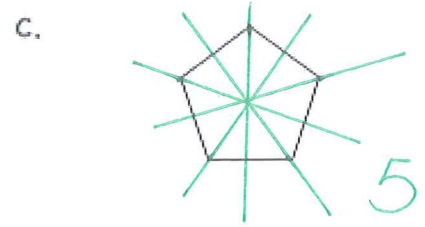
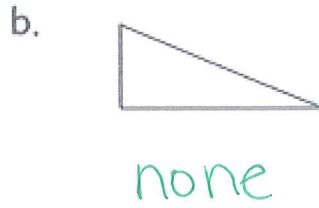
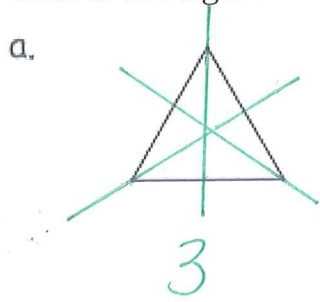
e. reflection across $y = -x$



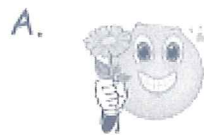
f. reflection across $y = x$



2. Draw in all lines of symmetry and state the number of lines of symmetry the figure has. If the figure does not have any lines of symmetry, write "none."



3. Which image is a reflection of the original?



4. Which image is a reflection of the original?

