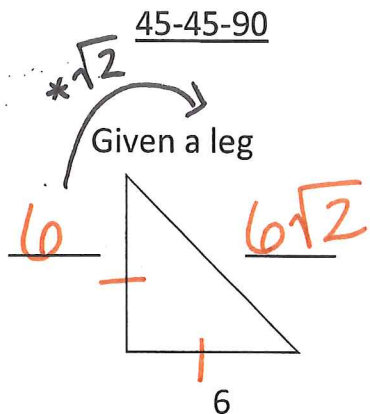
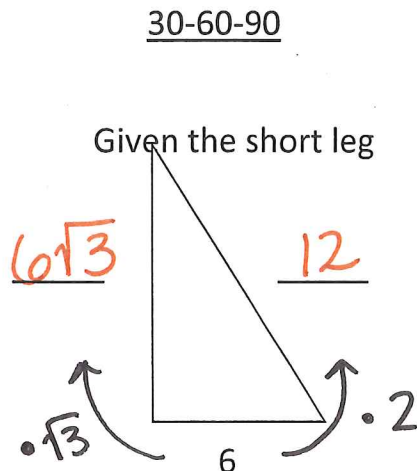


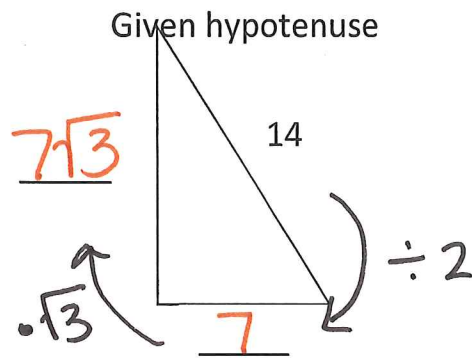
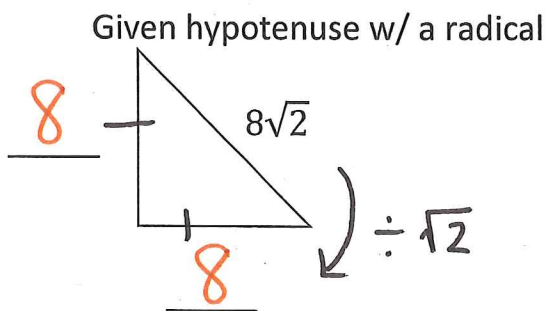
# Special Right Triangles: Stating my Case



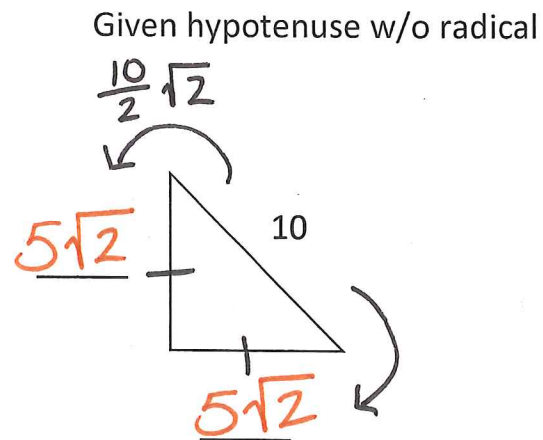
Case 1



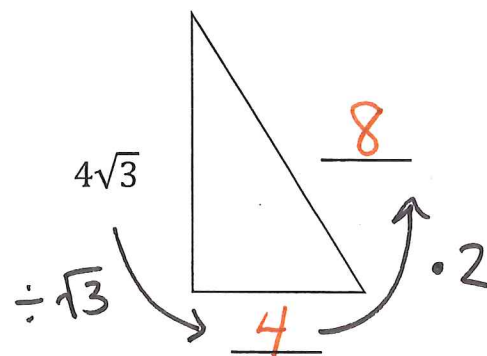
Case 2



Case 3

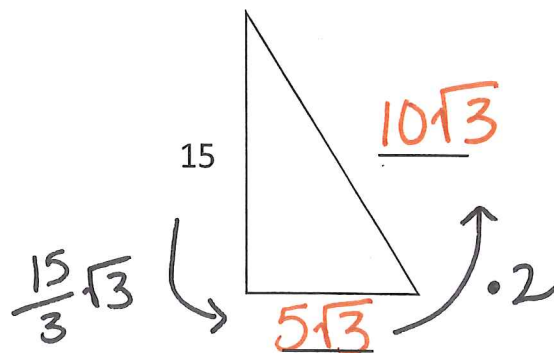


Given long leg with a radical



Case 4

Given long leg w/o radical



# Now You Try:

# Stating my Case

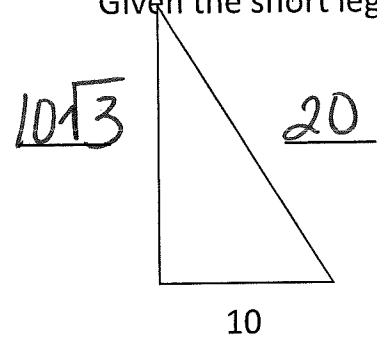
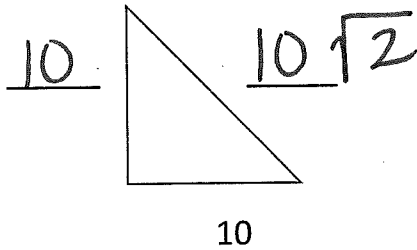
45-45-90

Case 1

30-60-90

Given a leg

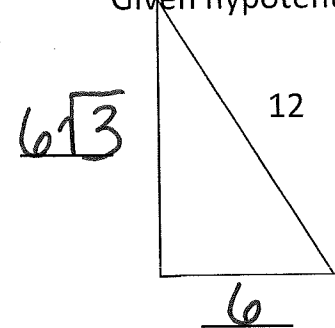
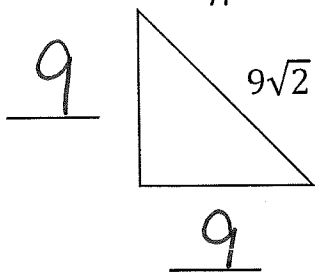
Given the short leg



Case 2

Given hypotenuse w/ a radical

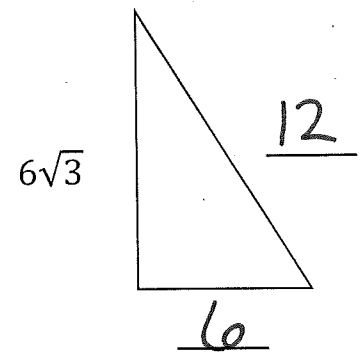
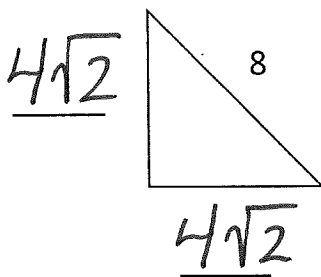
Given hypotenuse



Case 3

Given hypotenuse w/o radical

Given long leg with a radical



Case 4

Given long leg w/o radical

